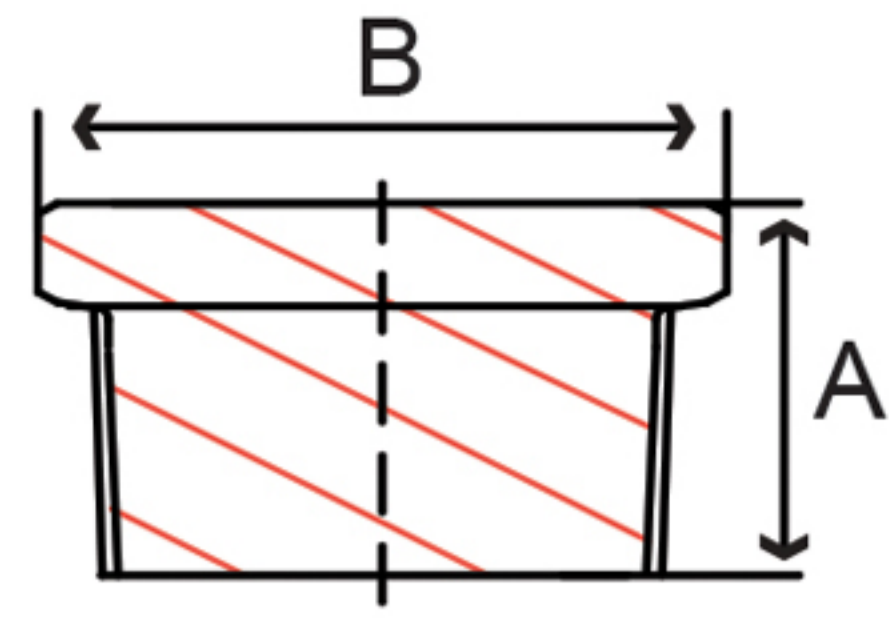


Forged Carbon Steel Plugs

3000#

**F
O
R
G
E
D**

Fig. 42HP3 – Hex Head Plug



Size IN	Part Number	A IN	B IN	Master	Weight LB
1/8	42HP3001	0.63	0.44	800	0.02
1/4	42HP3002	0.69	0.62	800	0.06
3/8	42HP3003	0.81	0.69	600	0.08
1/2	42HP3004	0.87	0.88	250	0.1
3/4	42HP3006	1.00	1.06	150	0.3
1	42HP3010	1.13	1.38	100	0.4
1-1/4	42HP3012	1.37	1.75	35	0.9
1-1/2	42HP3014	1.43	2.00	25	1.3
2	42HP3020	1.57	2.50	20	2.2
2-1/2	42HP3024	1.81	3.00	8	3.9
3	42HP3030	1.93	3.50	6	5.7
4	42HP3040	2.25	4.62	4	11.4

